

UM/Oxford Flagship Constellation (FC) Proposal Development Flowchart

To be **primarily associated** with **at most 1 FC**:

1. Must relate to FC theme;
2. Should involve **multiple PIs** or **collaborators** on the UM Oxford and/or UMMC campuses;
3. Should involve **multiple disciplines** on the UM Oxford and/or UMMC campuses; **and**
4. Must **NOT** be marked as primarily associated **with any other FC**.

Primary Associations are exclusive relationships; *however*, an FC may also be marked as *related to* one or more of the other FCs. →

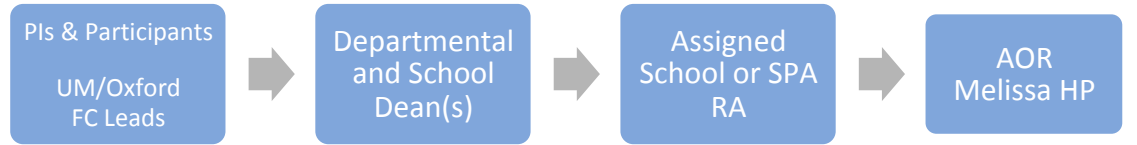
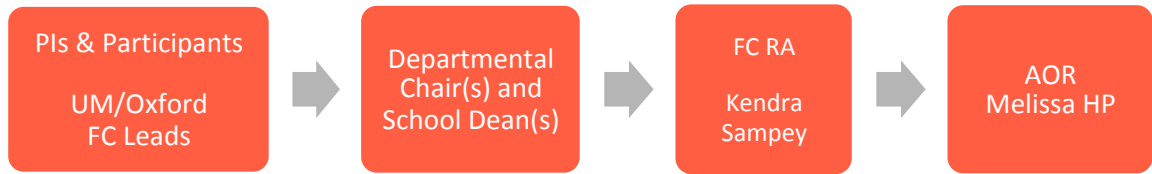
To be **related** to **one or more FCs**:

1. Must relate to the FC theme (same as criterion #1 ←); but,
2. Does not meet all the other criteria (#2, #3, and #4 ←) for a primary association.

Possible Examples of Relatedness:

- FC thematic single investigator proposals.
- FC thematic proposals with multi-investigators in the same discipline.
- Multi-UM/UMMC PI, multi-UM/UMMC discipline proposals primarily associated with another FC.
- Proposals that rely on other institutions to achieve multidisciplinary collaborations.*

FC Transmittal Routing



*Note: This Flowchart is intended as a *guide* to help pre-award specialists prompt, PIs mark, and constellation leaders confirm a proposal's primary association with, or relation to, a constellation. Every proposal is unique, and the ultimate judgment about a proposal's constellation status should be made by constellation leader(s), in consultation with the PI and ORSP, as needed.